



# INDAC

INNOVATIVE DESIGN AND CONSTRUCTION

*A Company of Very Clever People*

TOGETHER WE CAN DEVELOP YOUR FUTURE

# **Spinweld Driver setups**

**Spinweld Caps**

**BSP Threaded Spinwelds**

**BSPT Spigot Spinwelds**

**Two Start Spinwelds**

**American Buttress Spinwelds**

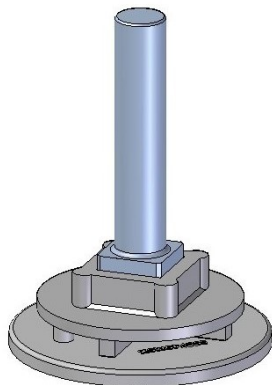
**Drain Buttress Spinwelds**

**Female Threaded Insert spinweld**

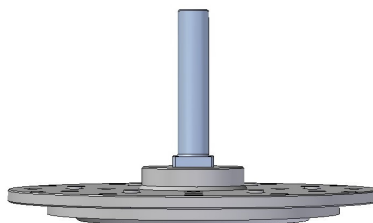
**Mesh Breather Spinweld**

# Sub Category

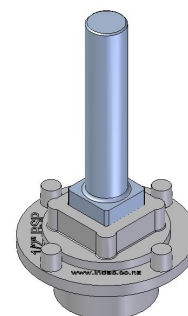
**Small Spinweld Cap Driver Assembly**



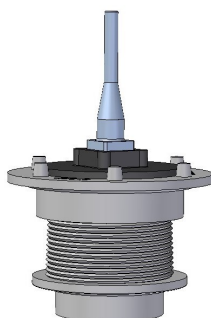
**Large Spinweld Cap Driver Assembly**



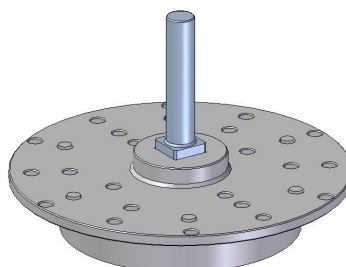
**BSP threaded Spinwelds Driver Assembly**



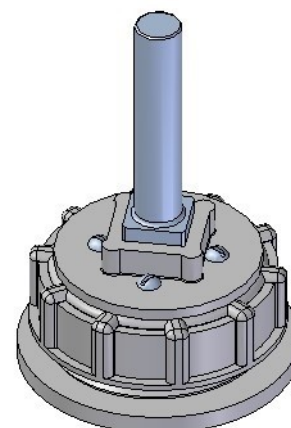
**BSPT Spigot Spinweld Driver Assembly**



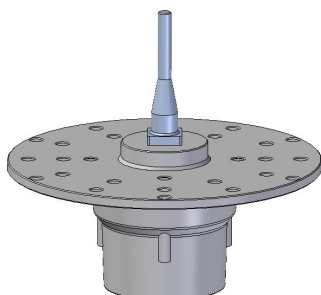
**Two Start Spinweld Driver assembly**



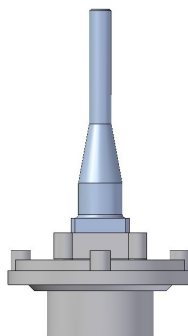
**American Buttress Spinweld Driver Assembly**



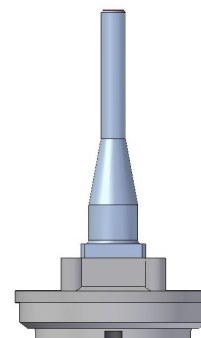
**Drain Buttress Spinweld Driver Assembly**



**Female Threaded Insert spinweld Driver**



**Mesh Breather Spinweld Driver Assembly**



CALL US NEW ZEALAND

Tel: 03 578 3034 Tel: 0800 803 888

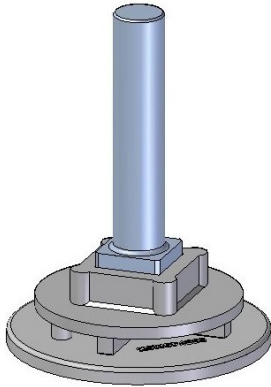
WWW.INDAC.CO.NZ

EMAIL US [info@indac.co.nz](mailto:info@indac.co.nz)

VISIT US

26 Stuart Street Blenheim

## 0-65mm Spinweld Cap Driver Assembly

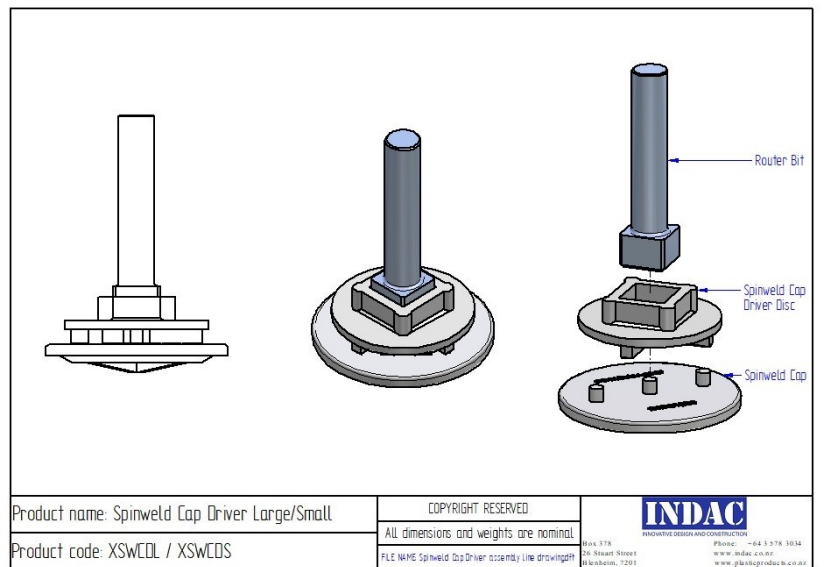


### Code:

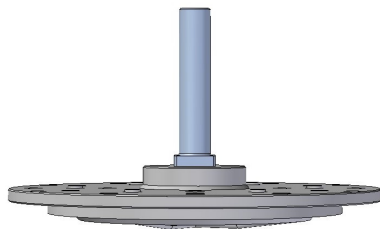
- XSWCDS (Small Spinweld cap driver) (0-25mm)
- XSWCDL (Large Spinweld cap driver)(25-65mm)
- CSWRBSQD12 (1/2" Router Bit)
- CSWRBSQD14 (1/4" Router Bit)

### Description:

- To Spinweld in a 0-65mm spinweld cap, you will need the spinweld Driver Cap that matches your spinweld cap size and a square drive router bit.



## 80-127mm or Test Patch Cap Spinweld Driver Assembly

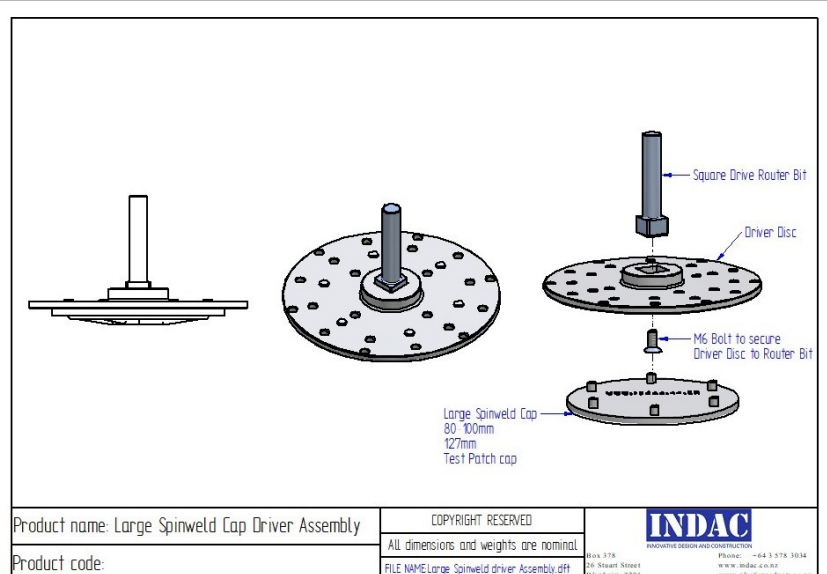


### Code:

- XSWDD (Driver Disc)
- CSWRBSQD12 (1/2" Router Bit)
- CSWRBSQD14 (1/4" Router Bit)

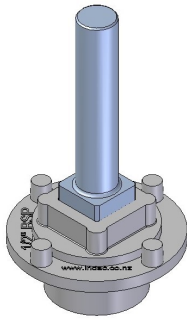
### Description:

- To Spinweld in an 80-127mm spinweld cap or Test Patch Cap, you will need the spinweld Driver Disc and a square drive router bit.



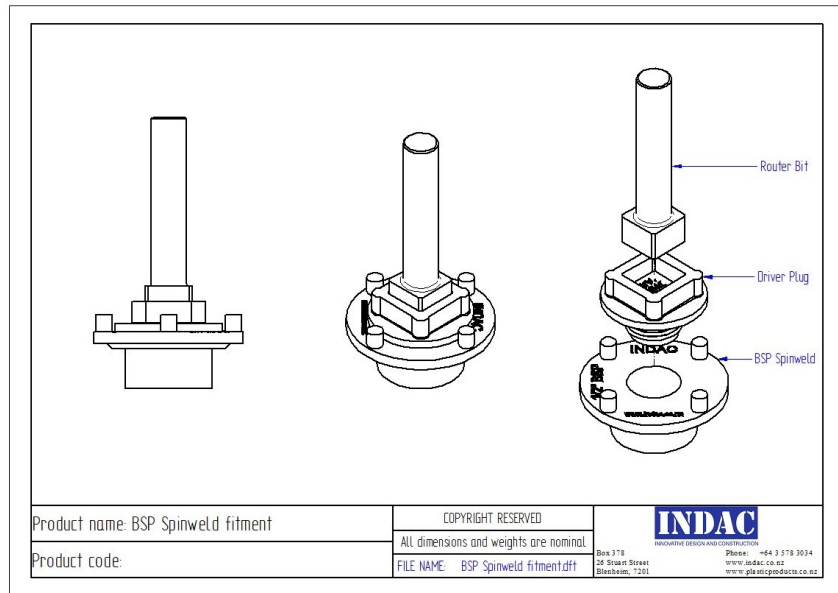
## Description:

- To Spinweld in a BSP Threaded fitting you will need, the matching size BSP Driver Plug and a Square Drive Router Bit.



## Code:

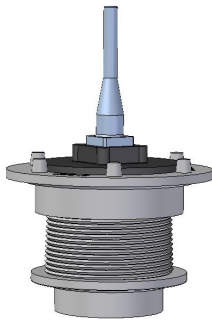
- XSWDPXX (Driver Plug)
- CSWRBSQD12 (1/2" Router Bit)
- CSWRBSQD14 (1/4" Router Bit)



## BSP threaded Spinwelds Driver Assembly

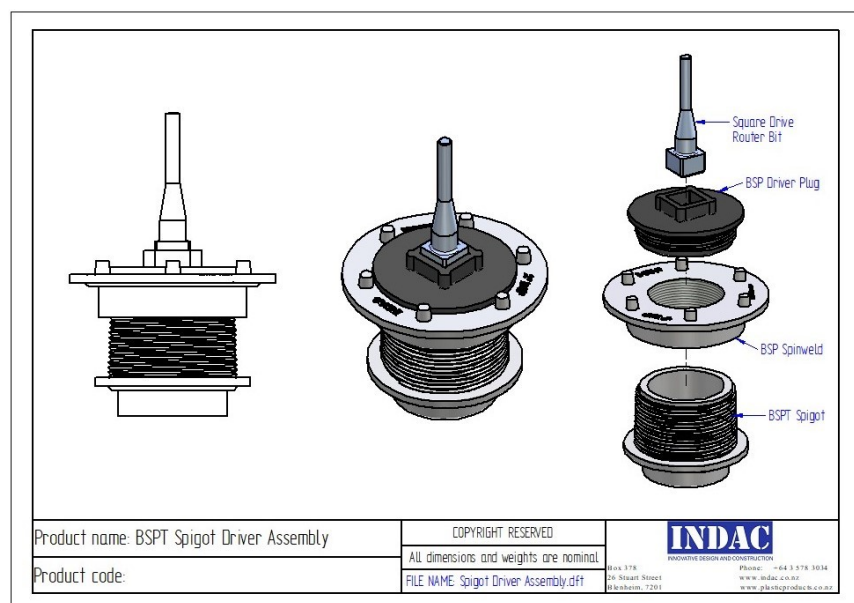
## Description:

- To Spinweld in a BSPT Spigot you will need, matching thread size BSP Spinweld with matching thread size BSP Driver plug and a square drive router bit.



## Code:

- XSWTXX (BSP Spinweld)
- XSWDPXX (Driver Plug)
- CSWRBSQD12 (1/2" Router Bit)
- CSWRBSQD14 (1/4" Router Bit)



## BSPT Spigot Driver Assembly

CALL US NEW ZEALAND

WWW.INDAC.CO.NZ

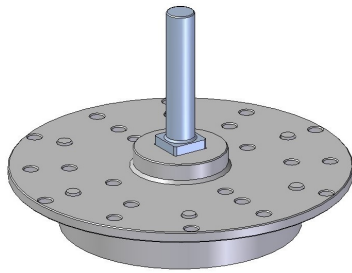
VISIT US

Tel: 03 578 3034 Tel: 0800 803 888

EMAIL US [info@indac.co.nz](mailto:info@indac.co.nz)

26 Stuart Street Blenheim

## Two Start Spinweld Driver Assembly

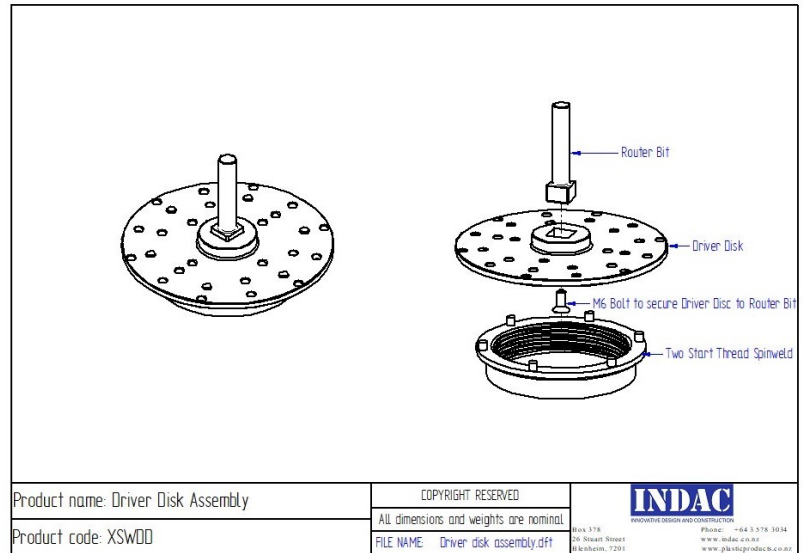


### Code:

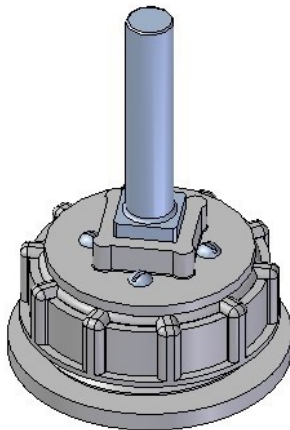
- XSWDD (Driver Disc)
- CSWRBSQD12 (½" Router Bit)
- CSWRBSQD14 (¼" Router Bit)

### Description:

- To Spinweld in a Two Start Spinweld you will need, a Driver Disc and a square drive router bit.
- The driver disc will fit both the 90mm and 100mm two start spinwelds.



## American Buttress Driver Assembly

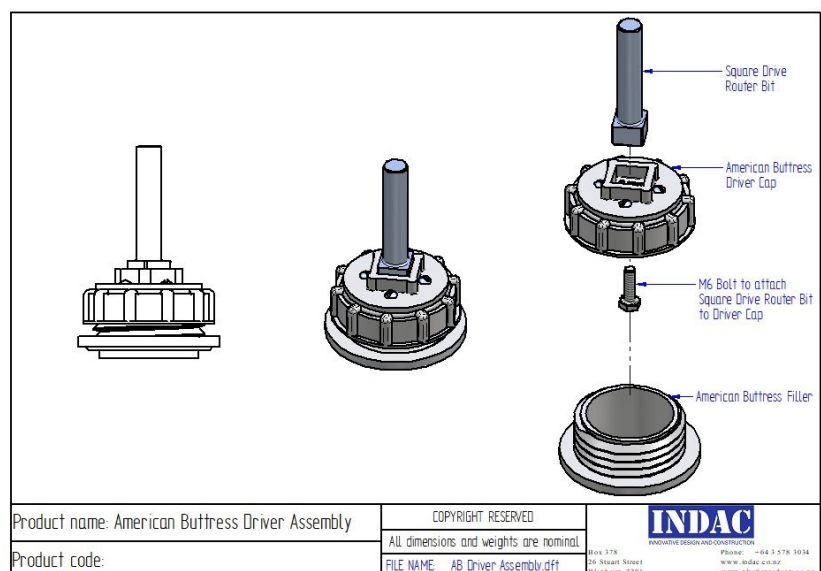


### Code:

- XDAB56 (56mm Driver Cap)
- XDAB88 (88mm Driver Cap)
- CSWRBSQD12 (½" Router Bit)
- CSWRBSQD14 (¼" Router Bit)

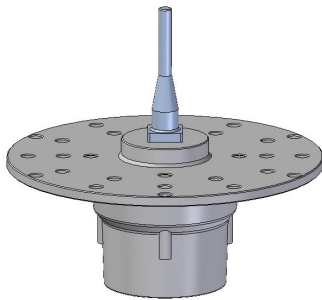
### Description:

- To Spinweld in your American Buttress Filler, you will need, The American Buttress Driver cap that matches your filler size and a Square Drive Router Bit.





## Drain Butress Spinweld Driver Assembly

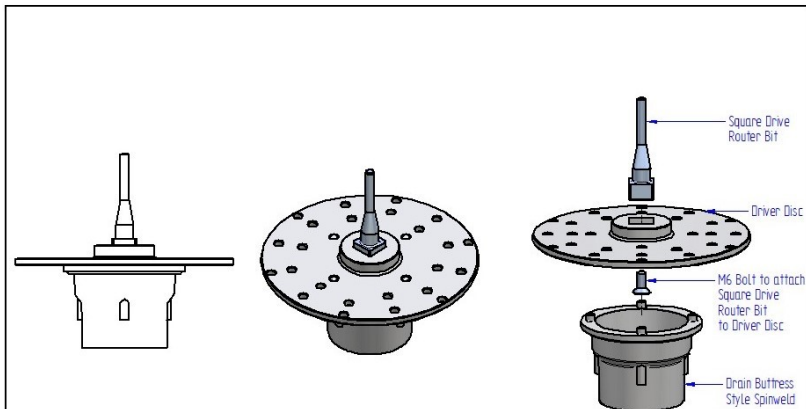


### Description:

- To Spinweld in your Drain Butress style threaded Spinweld, you will need a Driver Disc and a Square Drive Router Bit.

### Code:

- XSWDD (Driver Disc)
- CSWRBSQD12 (1/2" Router Bit)
- CSWRBSQD14 (1/4" Router Bit)



Product name: Drain Butress Spinweld Assembly

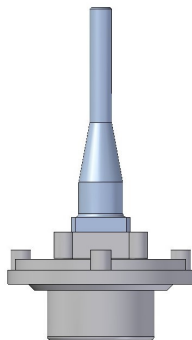
COPYRIGHT RESERVED

**INDAC**  
INNOVATIVE DESIGN AND CONSTRUCTION

Product code:

All dimensions and weights are nominal.  
FILE NAME: Drain Butress spinweld assembly.dft

Box 378  
20 Stuart Street  
Blenheim, 7203  
Phone: +64 3 578 3034  
www.indac.co.nz  
www.gibbsindac.co.nz

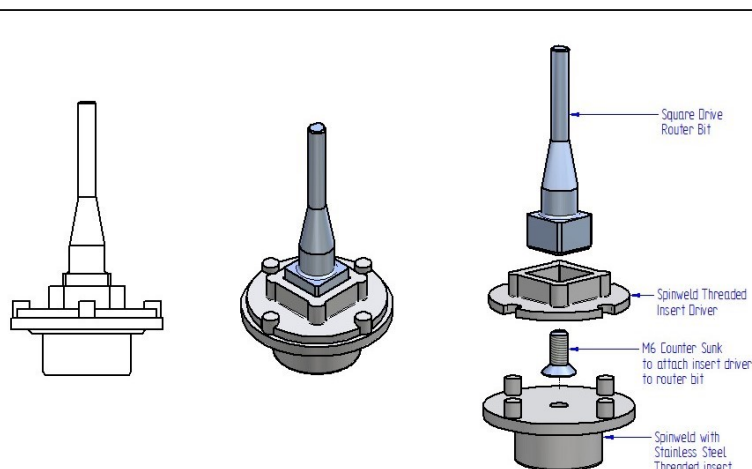


### Description:

- To Spinweld in your Female Threaded insert Spinweld you will need, a Threaded insert spinweld driver and a square drive router bit.

### Code:

- Driver
- CSWRBSQD12 (1/2" Router Bit)
- CSWRBSQD14 (1/4" Router Bit)



Product name: Spinweld Threaded Insert Driver Assembly

COPYRIGHT RESERVED

**INDAC**  
INNOVATIVE DESIGN AND CONSTRUCTION

Product code:

All dimensions and weights are nominal.  
FILE NAME: spinweld insert driver assembly.dft

Box 378  
20 Stuart Street  
Blenheim, 7203  
Phone: +64 3 578 3034  
www.indac.co.nz  
www.gibbsindac.co.nz

## Female Threaded Insert Spinweld Driver

CALL US NEW ZEALAND

WWW.INDAC.CO.NZ

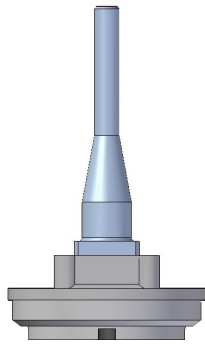
VISIT US

Tel: 03 578 3034 Tel: 0800 803 888

EMAIL US [info@indac.co.nz](mailto:info@indac.co.nz)

26 Stuart Street Blenheim

## Mesh Breather Spinweld Driver Assembly

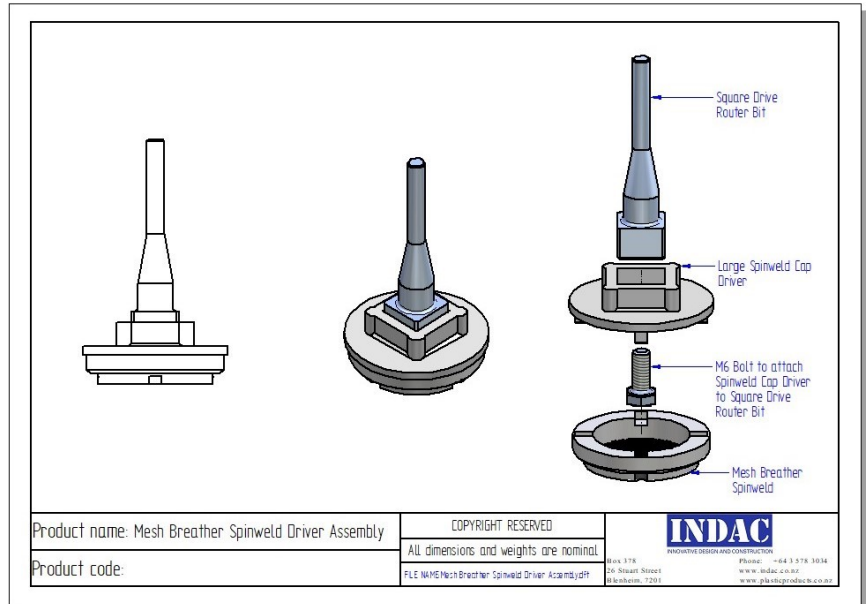


### Code:

- XSWCDL (Large Spinweld cap driver)
- CSWRBSQD12 (1/2" Router Bit)
- CSWRBSQD14 (1/4" Router Bit)

### Description:

- To Spinweld in your Mesh Breather Spinweld you will need, a large spinweld cap driver and a square drive router bit





# Router Speed settings for spinwelds

Product Size	Router Capacity in Watts	Recommended RPM	Recommended Welding Time	Recommended Rest Time at end of Welding
1/2" BSP	1200 Watts	24,000 RPM	4.5 Seconds	4 Seconds
3/4" BSP	1200 Watts	24,000 RPM	4.5 Seconds	4 Seconds
1/2" BSP	2300 Watts with Electronic Brake	9,000 RPM	3.5 Seconds	4 Seconds
3/4" BSP	2300 Watts with Electronic Brake	9,000 RPM	3.5 Seconds	4 Seconds
1" BSP	2300 Watts with Electronic Brake	9,000 RPM	4.5 Seconds	4 Seconds
1 1/4" BSP	2300 Watts with Electronic Brake	9,000 RPM	4.5 Seconds	4 Seconds
1 1/2" BSP	2300 Watts with Electronic Brake	9,000 RPM	4.5 Seconds	4 Seconds
2" BSP	2300 Watts with Electronic Brake	9,000 RPM	4.5 Seconds	4 Seconds
3" BSP	2300 Watts with Electronic Brake	9,000 RPM	5 Seconds	4 Seconds
100mm Two Start	2300 Watts with	9,000 RPM	5 Seconds	4 Seconds
2" Buttress Style	2300 Watts with	9,000 RPM	4.5 Seconds	4 Seconds
Spinweld Male 2" BSPT Threaded	2300 Watts with Electronic Brake	9,000 RPM	4.5 Seconds	4 Seconds
Spinweld Cap Test	2300 Watts with	9,000 RPM	3 Seconds	4 Seconds
S/Weld Cap 0-15mm	1200 Watts	24,000 RPM	2.5 Seconds	3 Seconds
S/Weld Cap 15-25mm	1200 Watts	24,000 RPM	2.5 Seconds	3 Seconds
S/Weld Cap 25-35mm	1200 Watts	24,000 RPM	2.5 Seconds	3 Seconds
S/Weld Cap 35-45mm	1200 Watts	24,000 RPM	2.5 Seconds	3 Seconds
S/Weld Cap 45-55mm	1200 Watts	24,000 RPM	2.5 Seconds	3 Seconds
S/Weld Cap 55-65mm	1200 Watts	24,000 RPM	2.5 Seconds	3 Seconds
Spinweld Breather	1200 Watts	24,000 RPM	2.5 Seconds	3 Seconds