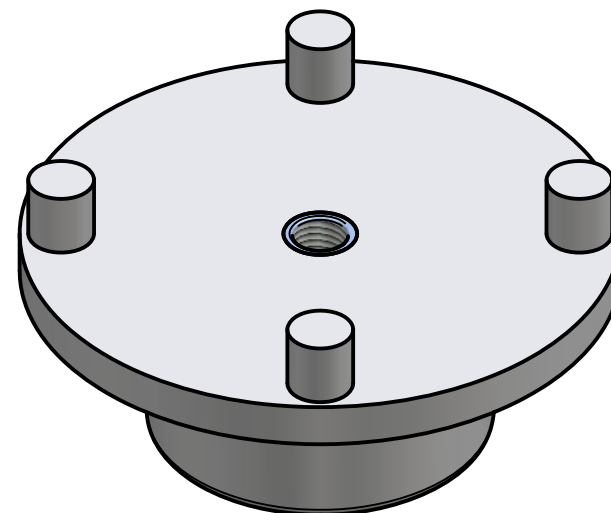
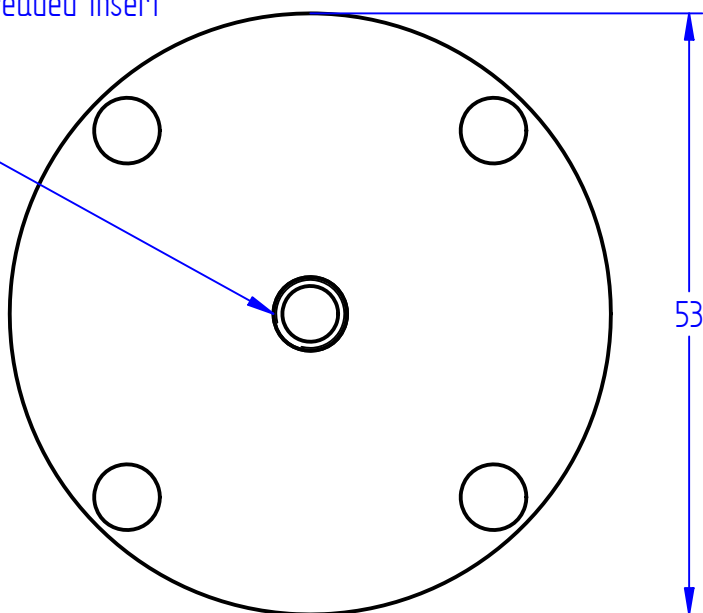


M6 stainless steel threaded insert



Product name: Spinweld 1/2" with 6mm SS insert

Product code: XSW12SSM6

COPYRIGHT RESERVED

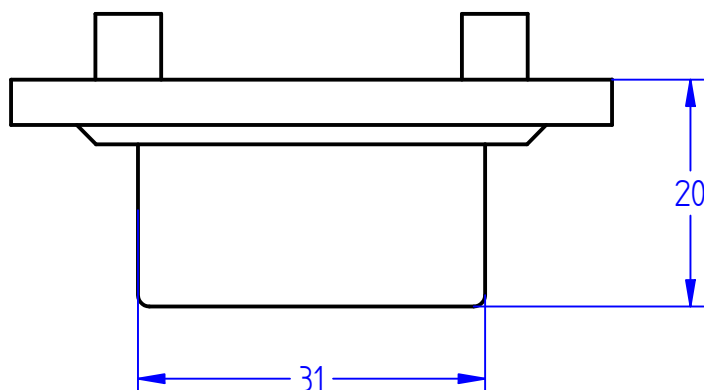
All dimensions and weights are nominal

FILE NAME: 1/2 inch SW 6mm insert.dft

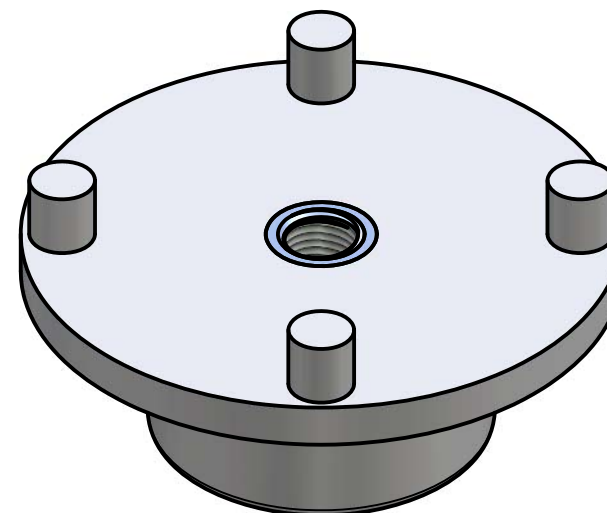
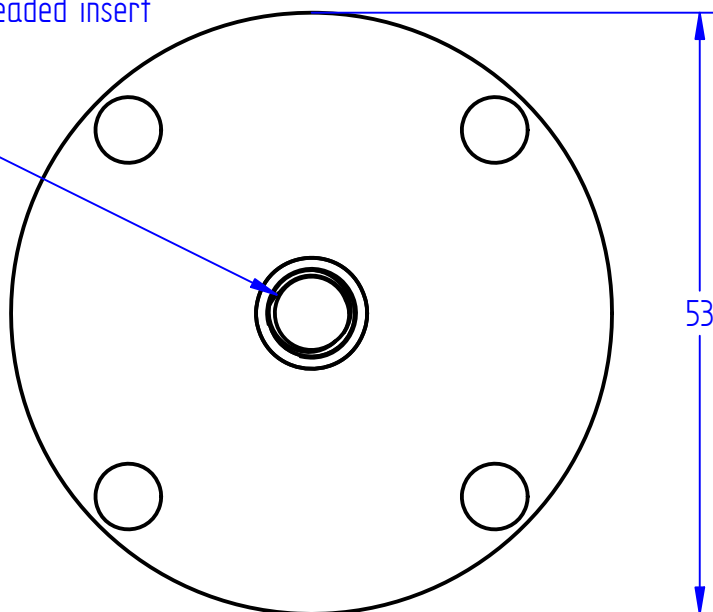
INDAC
INNOVATIVE DESIGN AND CONSTRUCTION

Box 378
26 Stuart Street
Blenheim, 7201

Phone: +64 3 578 3034
www.indac.co.nz
www.plasticproducts.co.nz



M8 stainless steel threaded insert



Product name: Spinweld 1/2 inch with 8mm SS insert

Product code: XSW12SSM8

COPYRIGHT RESERVED

All dimensions and weights are nominal

FILE NAME: 1/2 inch SW 8mm insert.dft

INDAC
INNOVATIVE DESIGN AND CONSTRUCTION

Box 378
26 Stuart Street
Blenheim, 7201

Phone: +64 3 578 3034
www.indac.co.nz
www.plasticproducts.co.nz