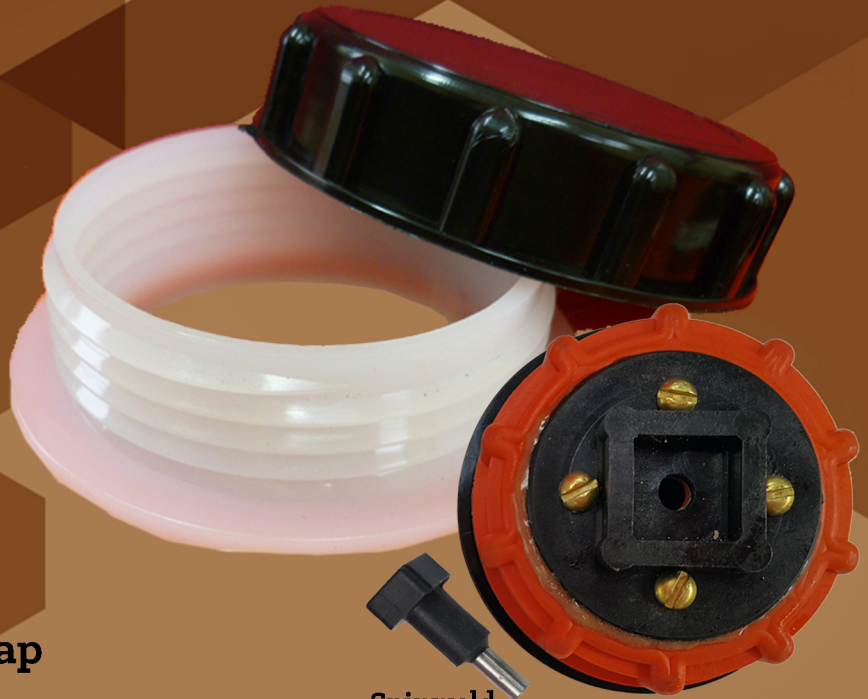


Indac Spinwelds American Buttress Filler + Cap

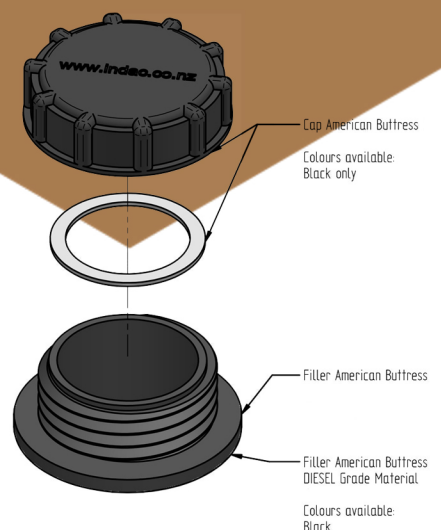


The spinweld quick fit system allows fast and accurate insertion of threaded spinwelds into water tanks.

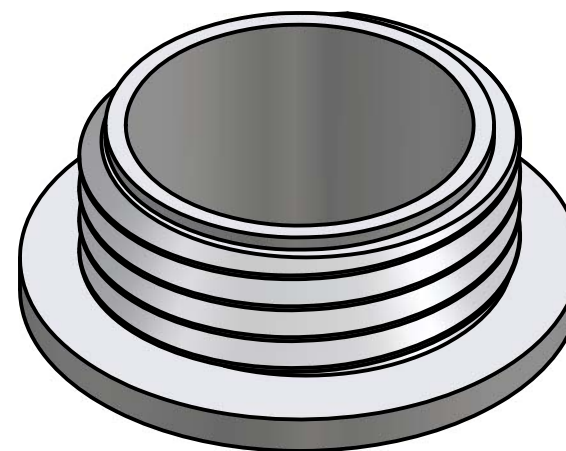
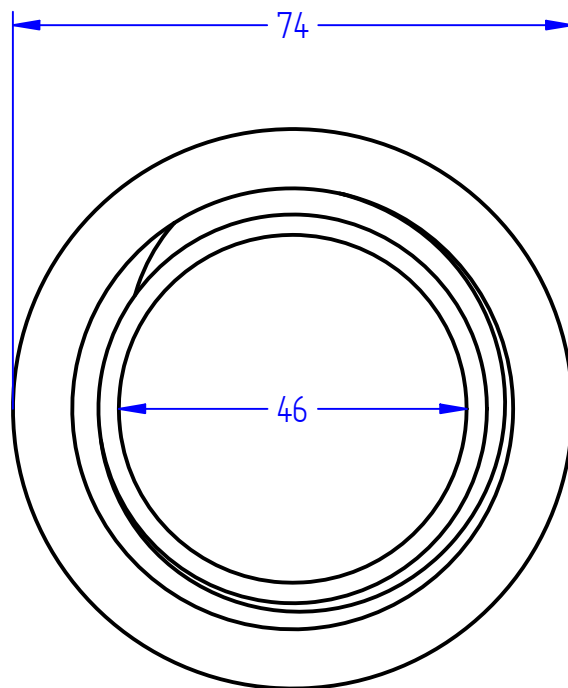
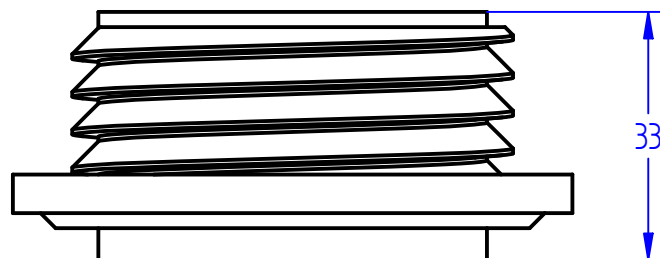


Spinweld quick fit filler cap and driver will be needed with purchase.

The American Buttress and cap come in two handy sizes 56mm and 88mm. The spigot fitting is a UV stable polyethelene can be a filler for tanks or an outlet for calf feeders. The special thread style ensures that the cap seals well even in inverted situations. The Nylon cap has excellent chemical resistance, is non-vented, and has an internal fixing point for a retaining chain.



Recommended hole saw size :
56mm Hole saw size 52mm
88mm Hole saw size 83mm



Product name: Filler American Buttress 56mm

Product code: XSWFAB56

COPYRIGHT RESERVED

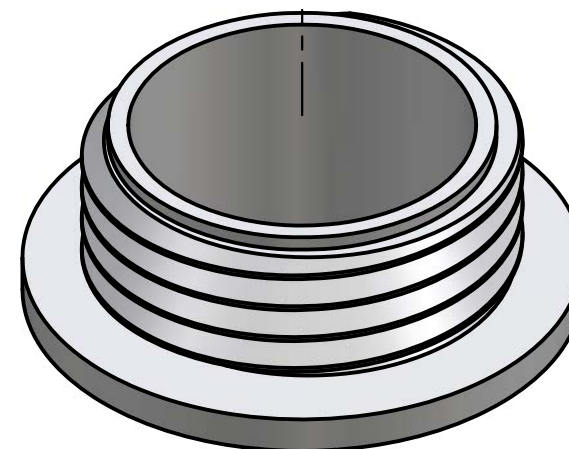
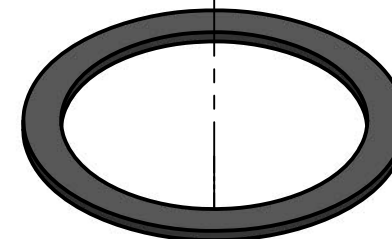
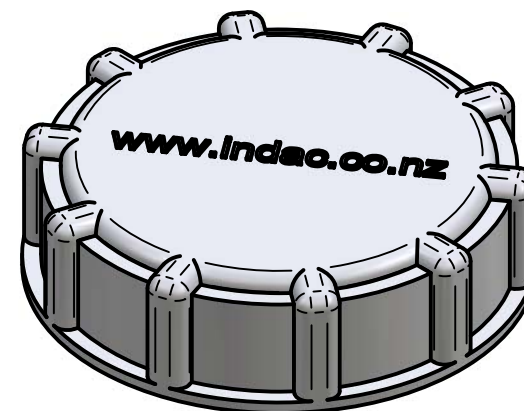
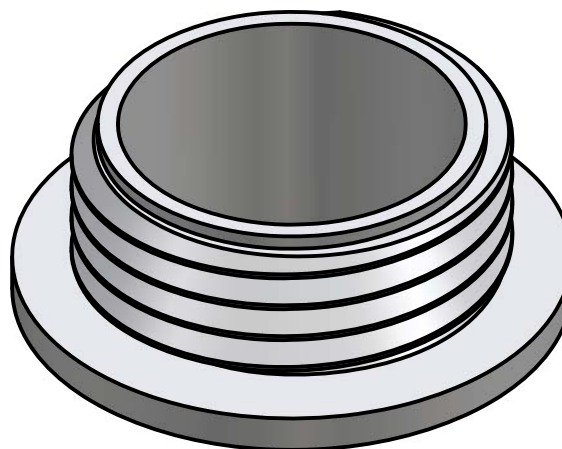
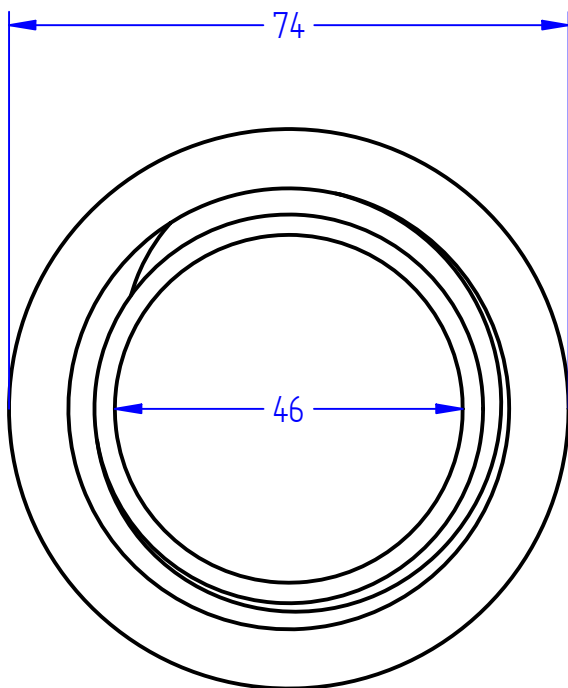
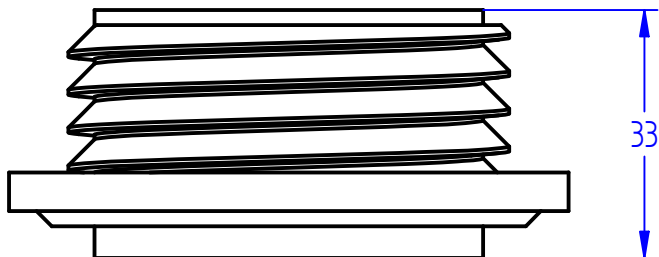
All dimensions and weights are nominal

FILE NAME: Filler AB 56mm.dft

INDAC
INNOVATIVE DESIGN AND CONSTRUCTION

Box 378
26 Stuart Street
Blenheim, 7201

Phone: +64 3 578 3034
www.indac.co.nz
www.plasticproducts.co.nz



Product name: Filler American Buttress 56mm

Product code: XSWFAB56

COPYRIGHT RESERVED

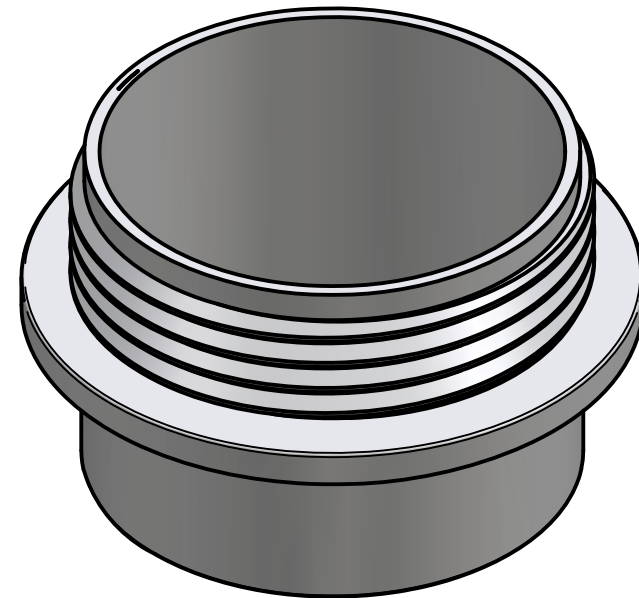
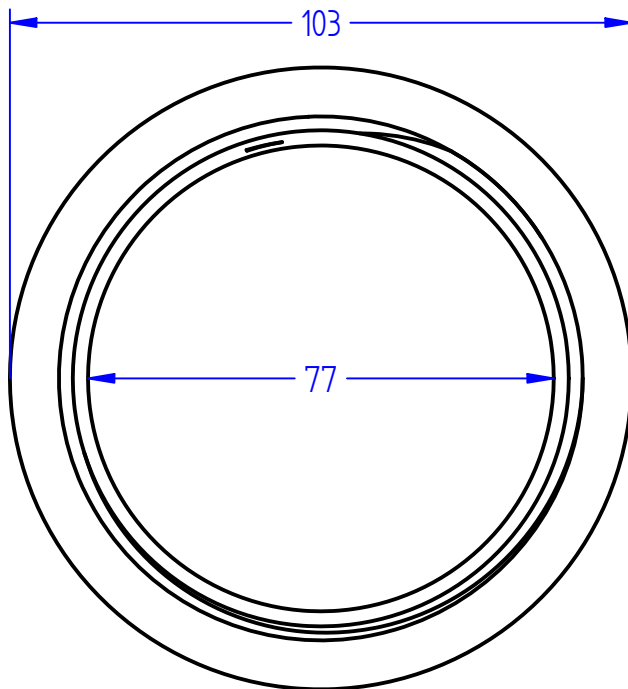
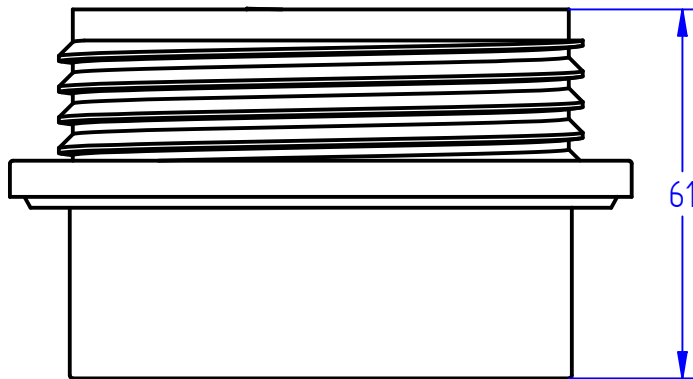
All dimensions and weights are nominal

FILE NAME: Filler AB 56mm with exploded view.dft

INDAC
INNOVATIVE DESIGN AND CONSTRUCTION

Box 378
26 Stuart Street
Blenheim, 7201

Phone: +64 3 578 3034
www.indac.co.nz
www.plasticproducts.co.nz



Product name: Filler American Buttress 88mm

Product code: XSWFAB88

COPYRIGHT RESERVED

All dimensions and weights are nominal

FILE NAME: Filler 88mm American Buttress.dwg

INDAC
INNOVATIVE DESIGN AND CONSTRUCTION

Box 378
26 Stuart Street
Blenheim, 7201

Phone: +64 3 578 3034
www.indac.co.nz
www.plasticproducts.co.nz