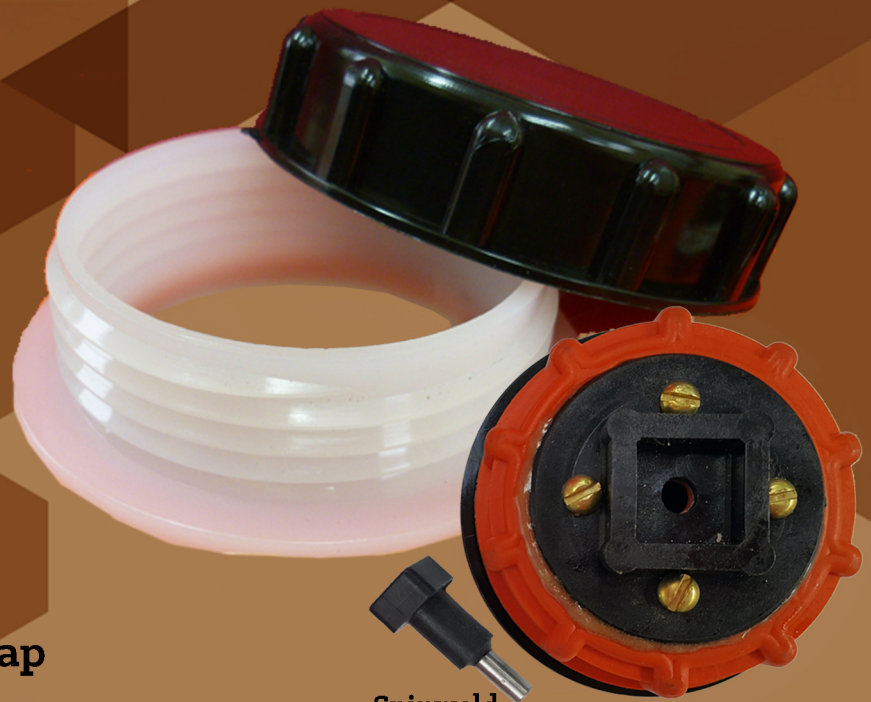


Indac Spinwelds American Buttress Filler + Cap

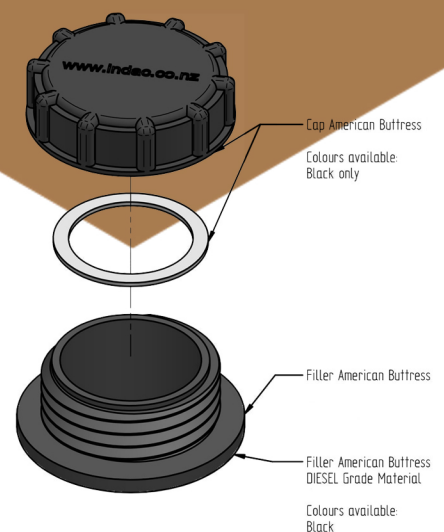


The spinweld quick fit system allows fast and accurate insertion of threaded spinwelds into water tanks.

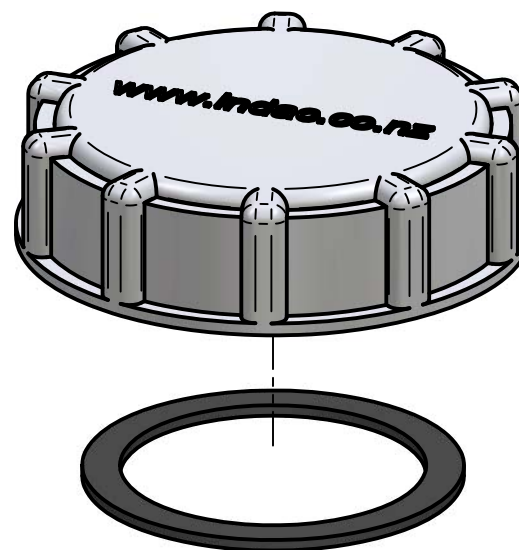
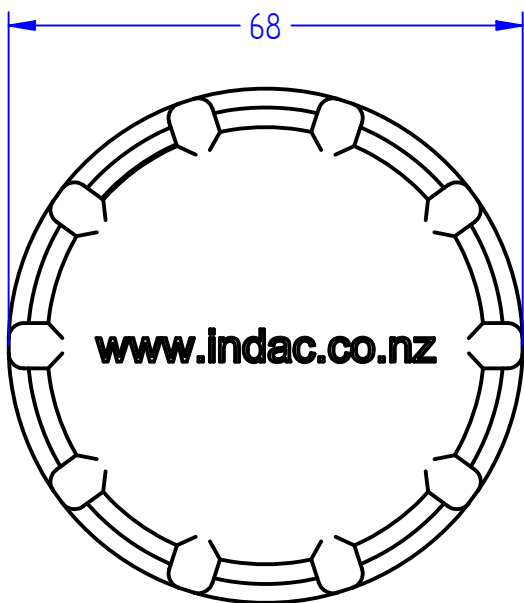
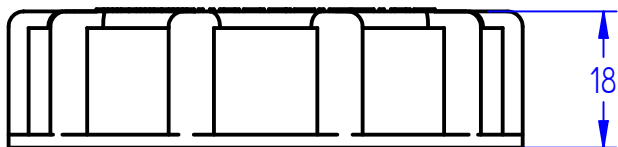
The American Buttress and cap come in two handy sizes 56mm and 88mm. The spigot fitting is a UV stable polyethelene can be a filler for tanks or an outlet for calf feeders. The special thread style ensures that the cap seals well even in inverted situations. The Nylon cap has excellent chemical resistance, is non-vented, and has an internal fixing point for a retaining chain.



Spinweld quick fit filler cap and driver will be needed with purchase.



Recommended hole saw size :
56mm Hole saw size 52mm
88mm Hole saw size 83mm



Product name: Cap AB 56mm With Washer Black

Product code: XCAB56WWB

COPYRIGHT RESERVED

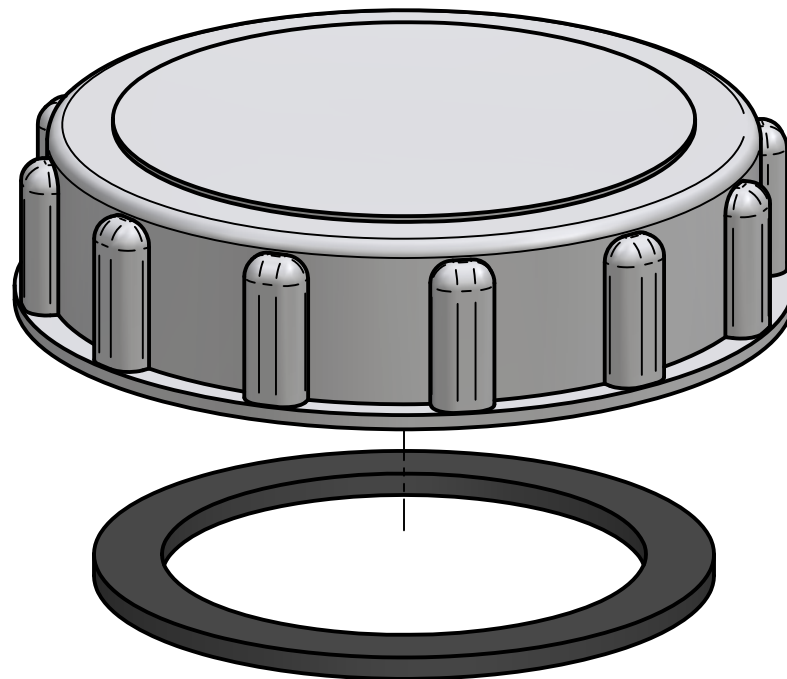
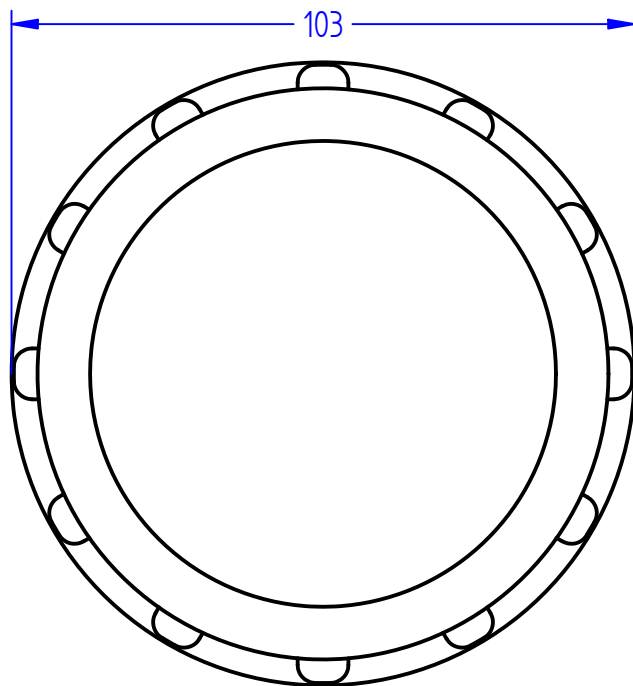
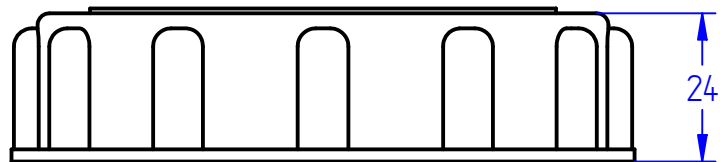
All dimensions and weights are nominal

FILE NAME: Cap AB 56mm with washer.dft

INDAC
INNOVATIVE DESIGN AND CONSTRUCTION

Box 378
26 Stuart Street
Blenheim, 7201

Phone: +64 3 578 3034
www.indac.co.nz
www.plasticproducts.co.nz



Product name: Cap AB 88mm with O-Ring

Product code: XCAB88WWB

COPYRIGHT RESERVED

All dimensions and weights are nominal

FILE NAME: Cap AB 88mm.dft

INDAC
INNOVATIVE DESIGN AND CONSTRUCTION

Box 378
26 Stuart Street
Blenheim, 7201

Phone: +64 3 578 3034
www.indac.co.nz
www.plasticproducts.co.nz